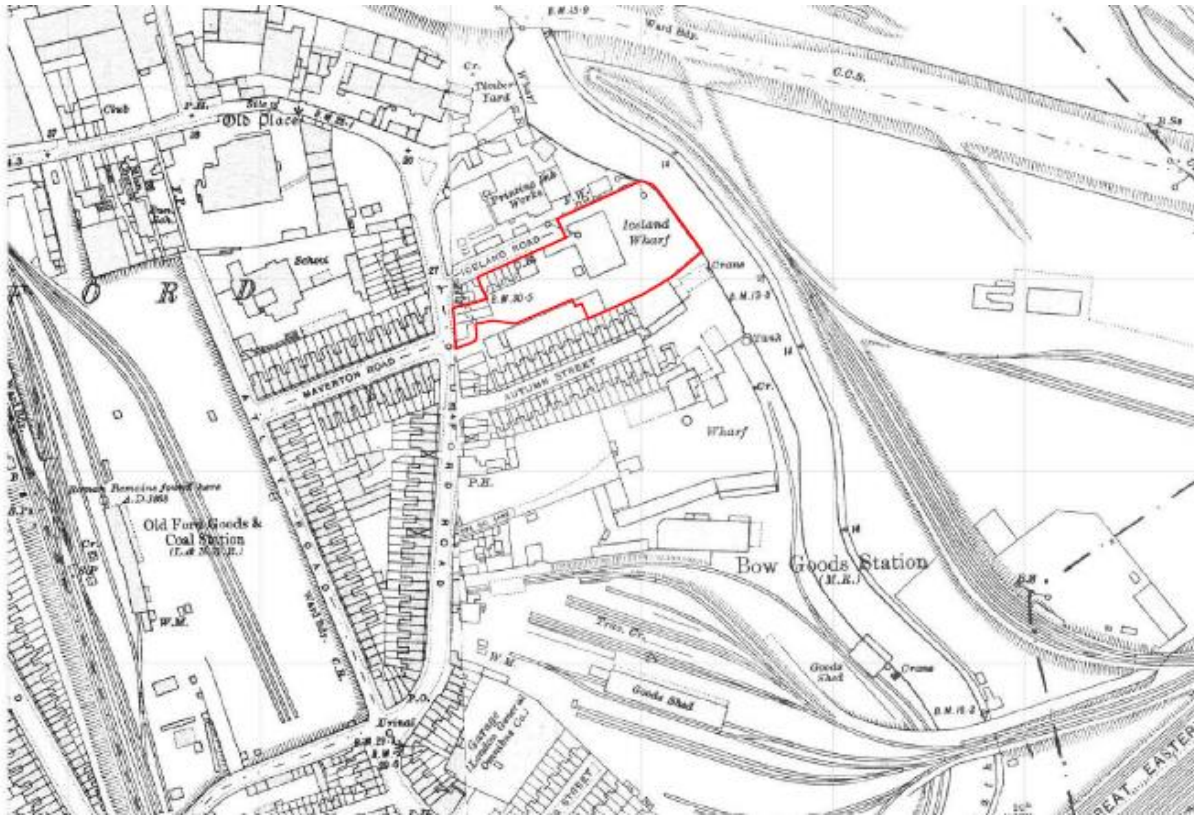
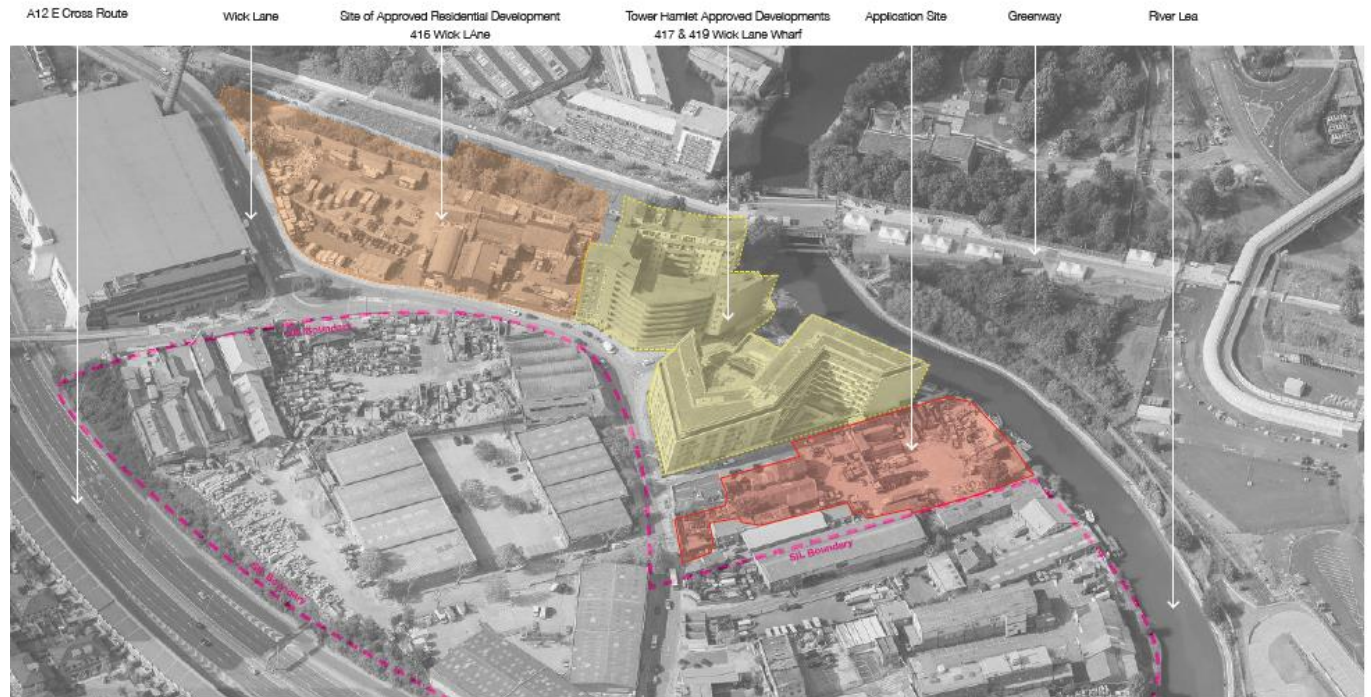


Appendix 1 Location Plan



Appendix 2 Site Context

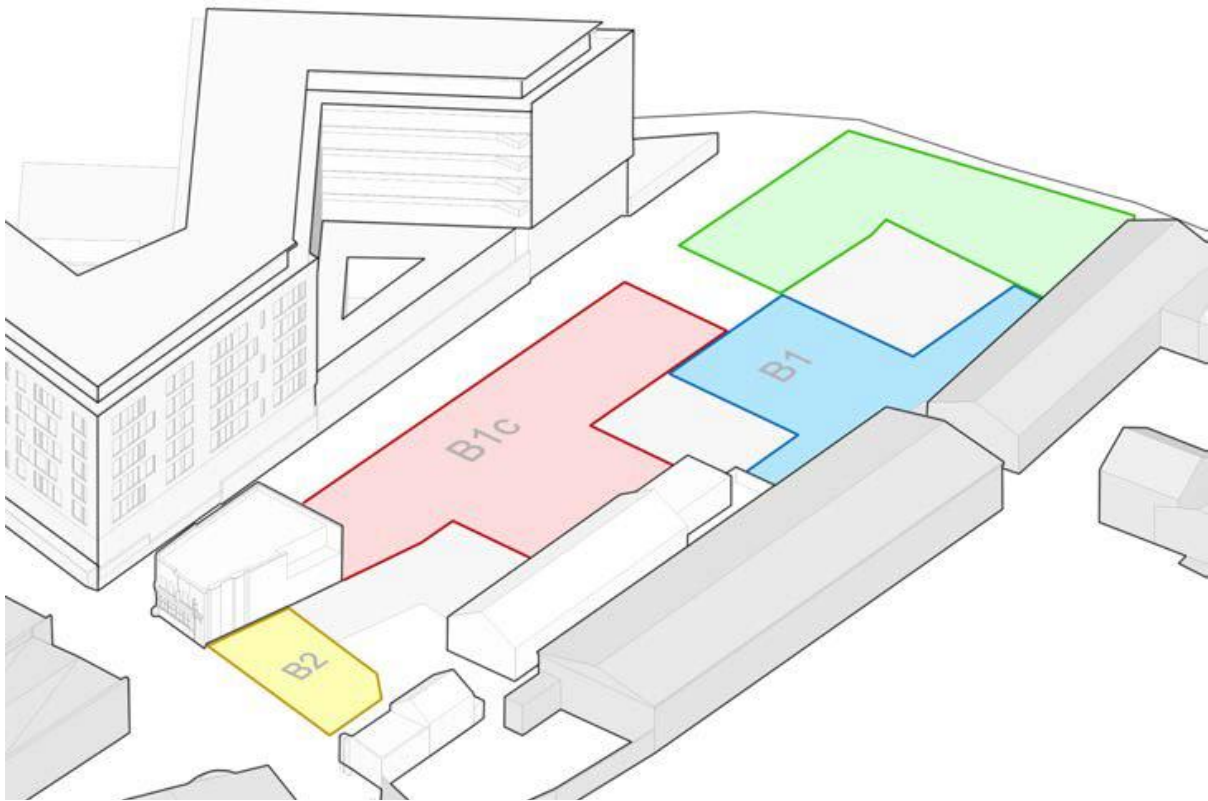


Appendix 3 Proposed Site Plan

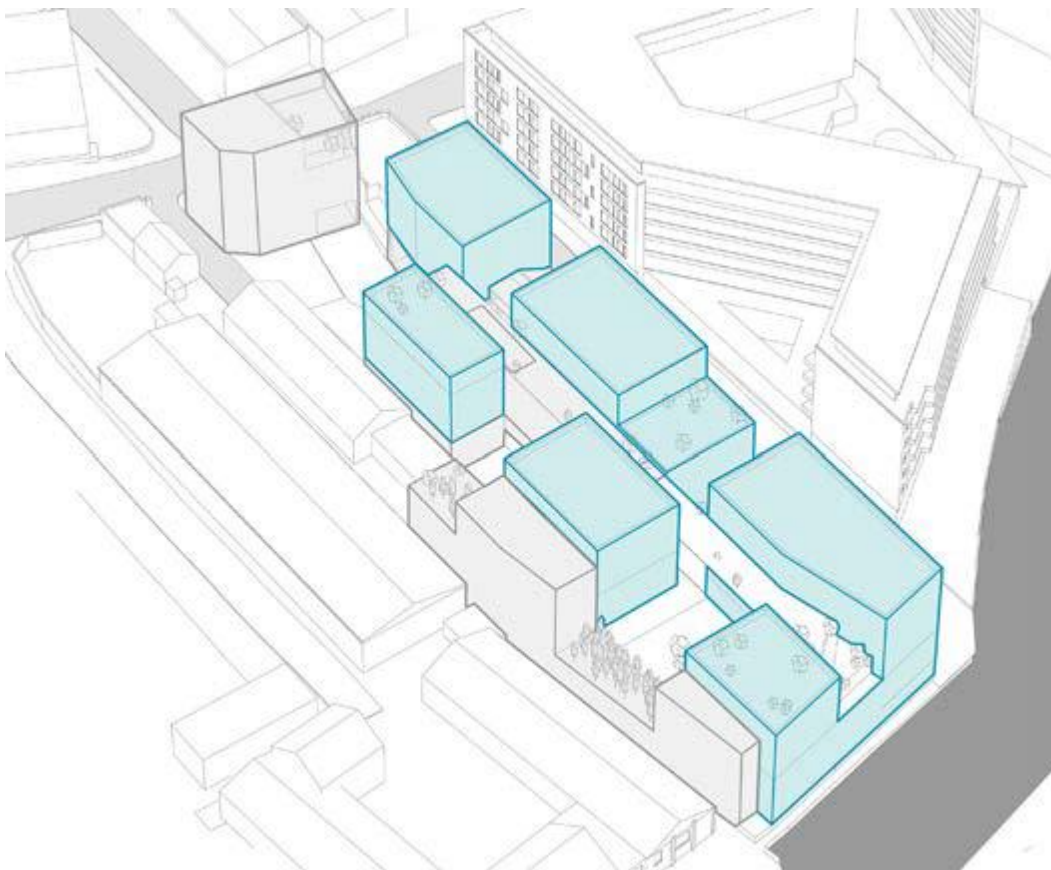


Proposed scheme link between OIL and SIL (to the south)

Footprints of commercial and residential development

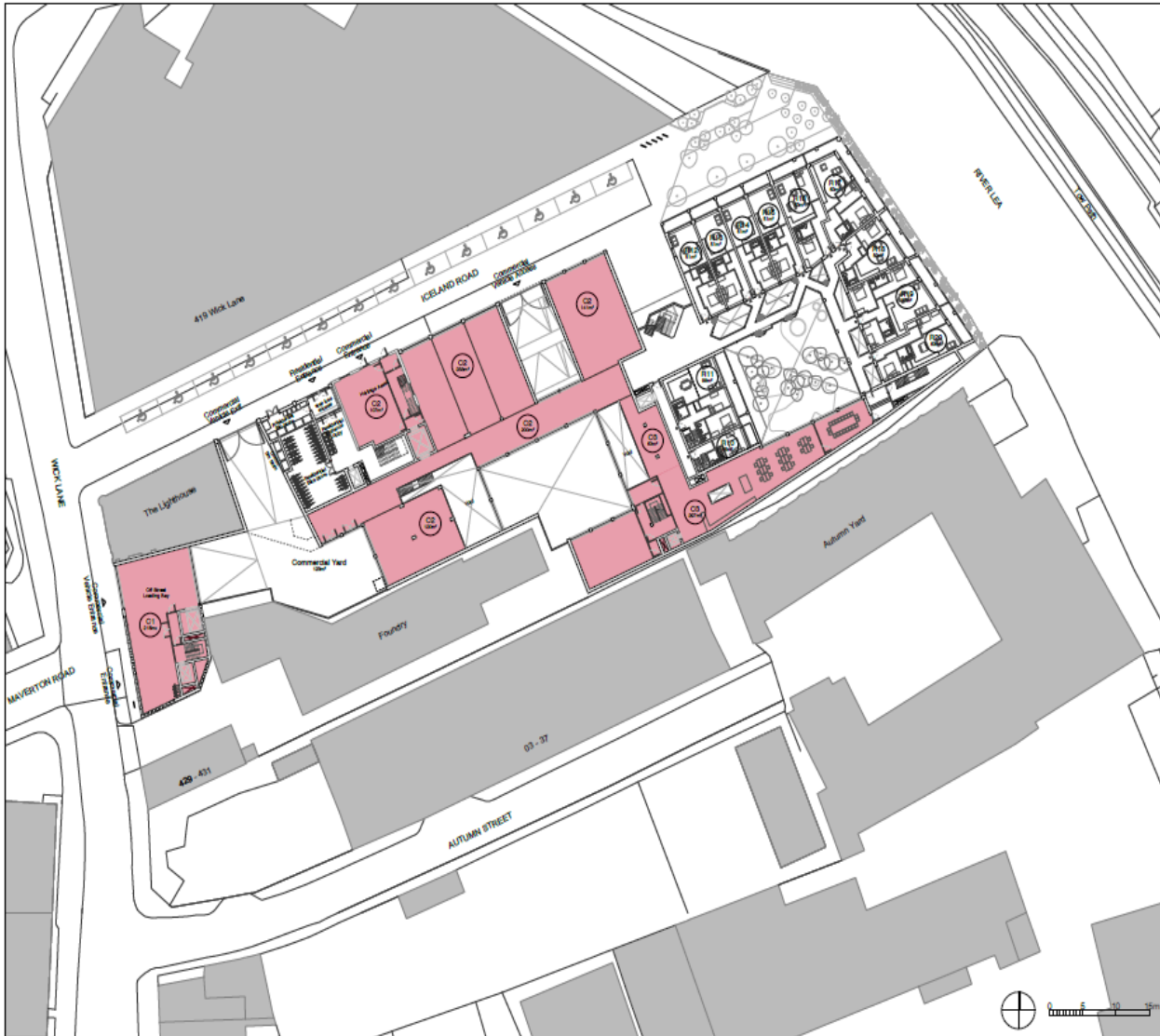


Footprint of residential massing



Appendix 4 Selection of Drawings

Lower Ground Plan



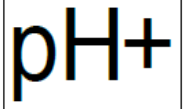
Copyright pH+. No implied license exists. This drawing should not be used to calculate areas for the purposes of valuation. Do not scale this drawing. All dimensions to be checked on site by the contractor and such dimensions to be their responsibility. All work must comply with relevant British Standards and Building Regulations requirements. Drawing errors and omissions to be reported to the architect.

- Revisions
- 18.02.23_Planning Submission
 - 18.03.26_RevA: Residential bike storage amended and located on Lower Ground and Ground Floor level only
 - 18.05.15_RevB: Riverfront landscaping updated
 - 18.06.04_RevC: Commercial cores reconfigured to the engineer's guidance
 - 18.06.14_RevD: Floor amendments to the engineer's guidance
 - 18.06.19_RevE: Plans updated to CRP comments
 - 18.06.14_RevF: CRP not related to planning comments

Commercial space

Albion Mills
3rd Floor
18 East Tenter Street
London
E1 6DN

t: 020 7613 1965
e: mail@phplusarchitects.com
w: www.phplusarchitects.com



Project
Iceland Wharf
London, E3

Drawing
Proposed
Ground Floor Plan

Scale at A3 1:500	Date February 2018
Job Number pH+697	Drawing No. Rev 0200-GA F
Drawn by AR/CS	Checked by GH
Status Planning	

First Floor Plan

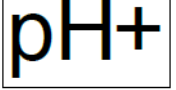


Copyright pH+. No implied license exists. This drawing should not be used to replicate areas for the purpose of valuation. Do not scale the drawing. All dimensions to be checked on site by the contractor and such dimensions to be their responsibility. All work must comply with relevant British Standards and Building Regulations requirements. Drawing errors and omissions to be reported to the architect.

Revisions
 18.02.23_Planning Submission
 18.02.14_RevA: Plans updated to the engineer's guidance
 18.02.09_RevB: Updated in response to Review Panel comments
 18.02.14_RevC: C2M related to planning comments

Commercial space

Albion Mills
 3rd Floor
 18 East Tenter Street
 London
 E1 5DN
 T: 020 7613 1965
 e: mail@phplusarchitects.com
 w: www.phplusarchitects.com



Project
 Island Wharf
 London, E3

Drawing
 Proposed
 First Floor Plan

Scale at A0 1:500	Date February 2018
Job Number pH+697	Drawing No. Rev 0201-GA C
Drawn by ARICS	Checked by GH
Status Planning	